



**2021/22  
Annual Report**

# The Bentway 2021/22 Annual Report

2

Welcome

4

Stories

24

People of  
The Bentway

34

Taking on the  
Street

40

Meet our Team

42

Donors and  
Partners

44

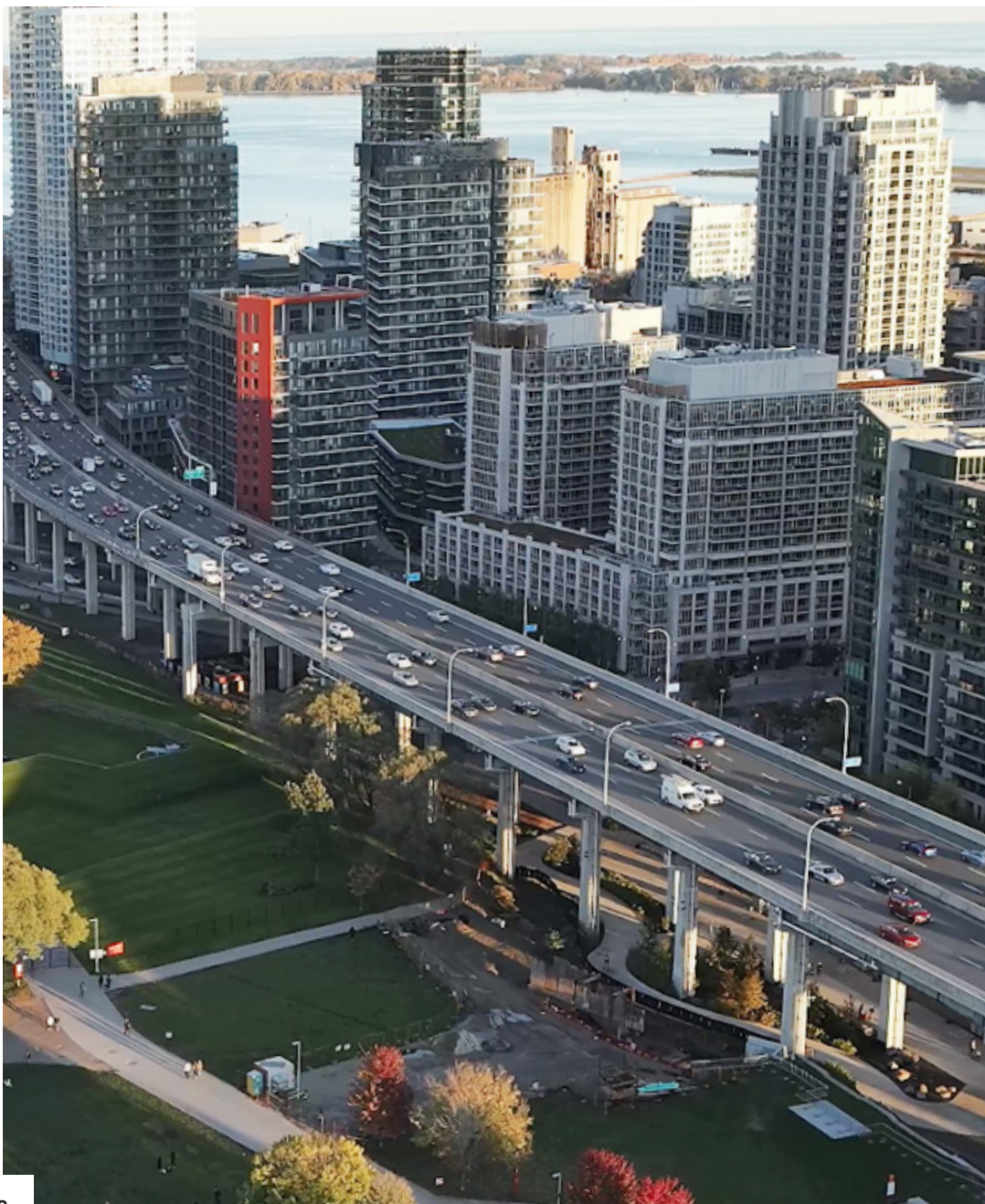
Our Finances

We acknowledge that we operate on the treaty lands of the Mississaugas of the Credit and the traditional territory of the Huron-Wendat, the Haudenosaunee, the Métis, and many other Indigenous nations.

Toronto is now home to many diverse Indigenous people. We recognize them as the past, present, and future caretakers of this land. We pay our respects to all who have gathered and will continue to gather in this place. We are grateful to have the opportunity to work together to care for The Bentway lands and act as stewards of the space.

The first phase of The Bentway is located on lands that are part of Fort York National Historic Site, recognized by the Government of Canada as being of national significance.

# Letter from our Board Chair and Co-Executive Directors



Thank you for continuing to believe in The Bentway's work to **ignite the urban imagination**. It's a slightly shorter reporting year for us as the organization transitions to a new fiscal year-end; here we share some of our favourite Bentway moments from July 2021 through March 2022. But there's certainly been no shortage of achievements:

We worked with our friends at Exhibition Place to reveal another side of the Gardiner, including unseen spaces, new community connections, and the possibilities presented by strong creative partnerships. At *Pulse Topology* last October, we brought the city together at a time when many personal connections felt just out of reach.

Inuvialuk artist Maureen Gruben prompted us to reflect on our relationship with this land and how we move through it, as 29,560 winter skaters weaved through her powerful artworks at our Skate Trail. While many community and cultural venues had to close their doors during the pandemic, we worked hard to ensure Bentway spaces remained open, welcoming, and safe.

We forged collaborations with partners like SKETCH Working Arts, Luminato, the Centre for Addiction and Mental Health, Scotiabank CONTACT Photography Festival, and the Memory Work Collective, working together to explore new modes of public presentation and engagement during ArtworxTO, Toronto's Year of Public Art 2021-2022.

And, together with the City of Toronto, Waterfront BIA, Toronto Downtown West BIA, Exhibition Place, and many others, we continued to chart an ambitious and bright future for the Gardiner. We remain driven by the **power of possibility** and hope that you'll continue to work with us as we learn from the city and each other in the years ahead.

Warmly,



A stylized, handwritten signature in black ink.

**MAZYAR MORTAZAVI**  
Board Chair, The Bentway  
President & CEO, TAS



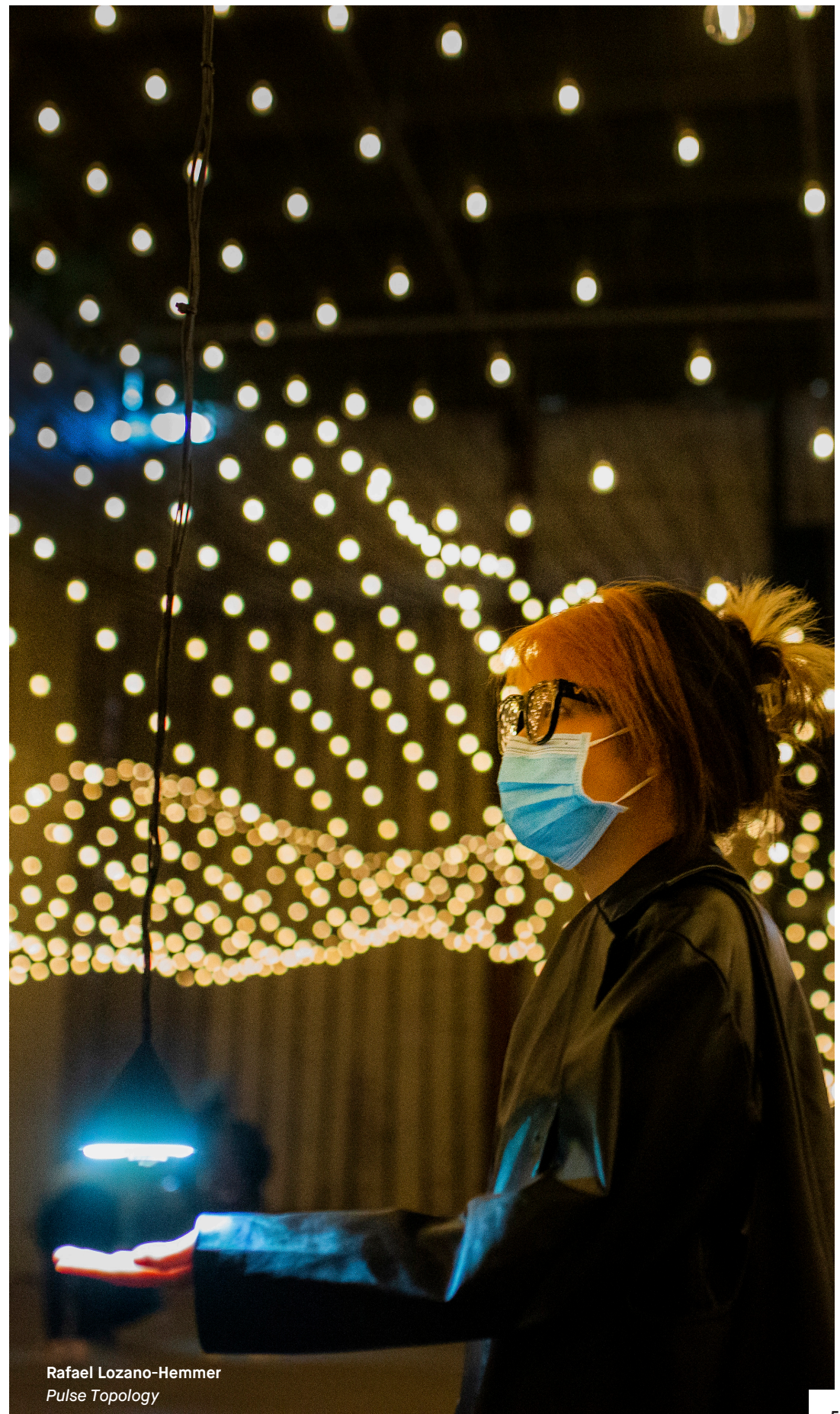
A handwritten signature in black ink.

**ILANA ALTMAN**  
Co-Executive  
Director

A handwritten signature in black ink.

**DAVID CAREY**  
Co-Executive  
Director

# A New Side to the Gardiner



Rafael Lozano-Hemmer  
*Pulse Topology*



Located just west of The Bentway Phase 1 are our neighbours at Exhibition Place, one of Toronto's top destinations for festivals, conventions and trade shows – and a space full of possibilities.

Together we saw an opportunity to bring a wholly unique experience to visitors in an enclosed area under the Gardiner, used by Exhibition Place and their tenants for storage, known as "the Cubicles." The scale, industrial quality, and prime location of these rooms was ripe for exploration.

The Bentway and Exhibition Place teamed up to reveal this hidden architecture, welcome the local community, and unlock new possibilities for future shared connectivities between our two sites, all while seeding a longer-term effort to continue the Gardiner's multiplicity westbound into Exhibition Place and the planned Ontario Line station under the Expressway.

Positioned as a marquee presentation during ArtworxTO, Toronto's Year of Public Art 2021-2022, we knew that a public art experience could achieve these key goals and inspire Torontonians in the process.



The Bentway and Exhibition Place were proud to co-present a dazzling new work by Mexican-Canadian artist **Rafael Lozano-Hemmer**, entitled *Pulse Topology*. Over its four-week run, the artwork attracted more than 10,500 visitors, hosted in COVID-safe timed-entry cohorts.

A suspended canopy of 3,000 lights created an inverted, hanging landscape of mountains and valleys, displaying glimmering and rhythmic patterns of visitors' heartbeats, captured with responsive biometric technology. *Pulse Topology* reacted in real-time, offering an artwork that changed and evolved with every visit.

Lozano-Hemmer describes the artwork as "a visualization of human vital signs after a time of social-distancing and mourning," a timely pandemic-era portrait of a community, told through light and sound.

Like all Bentway programs, thanks to the generosity of our supporters, *Pulse Topology* was presented free of charge to attendees.



Rafael Lozano-Hemmer  
*Pulse Topology*



## CEO OF EXHIBITION PLACE

### Don Boyle

Don Boyle was one of the champions behind *Pulse Topology*, the first of many exciting joint endeavours led by The Bentway and Exhibition Place.

As CEO of Exhibition Place, Don oversees a treasured Toronto site that hosts more than 1,260 events and festivals each year, including the CNE, Royal Agricultural Winter Fair, and Honda Indy Toronto. A long-time public servant, Don brings an incredible wealth of experience and marked passion for community engagement to his role.

☐ I appreciate the depth of experience and creativity The Bentway brings to its work. Our inaugural co-presentation at the ExPlace Cubicles, *Pulse Topology*, was a great success.

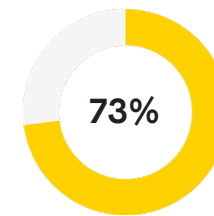
In the days since, we at ExPlace are asking ourselves how we can extend the creative spirit of The Bentway and thread it into our own vision for the future? How can we work together with The Bentway and others to create a seamless connection for our shared neighbours as well as visitors to our City? I know that we will continue to work collaboratively to answer these and many other questions, and most importantly, to bring incredible experiences to the city."



## Partnership with HeART Lab

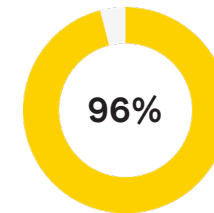
Recognizing that public art plays a critical role in sustaining mental health and fostering human connection, we worked with CAMH's HeART Lab to invite front-line health care workers from the Centre for Addiction and Mental Health (CAMH) to an exclusive preview. These 'Heart of the City Champions' were the first to add their heartbeats to the collective project.

Throughout the run of the artwork, HeART Lab surveyed attendees to better understand their connection to the exhibition, and its impact on their well-being. The results were indeed startling, re-affirming the important role public art plays in our collective health, sense of community, and connection to the city.



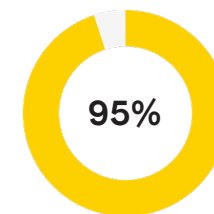
### Impact of COVID-19

73% feel that the pandemic has had a moderate to severe impact on their mental health.



### Health and Well-being

96% feel that public art is important or very important to health and well-being.



### Community Building

95% feel that public art is important or very important to community building.

# Moving with Joy



Maureen Gruben  
*Moving with Joy*

It was a special winter season at The Bentway, and our second presented during the COVID-19 pandemic.

In addition to welcoming **29,560 visitors** for free skating, serving **5,207 cups of hot chocolate**, and offering over **450 hours of ice operations**, this winter we presented two artworks by Inuvialuk artist **Maureen Gruben**, made possible with support from TD Bank Group, the Canada Council for the Arts, Partners In Art, Billy Bishop Toronto City Airport, CityPlace Fort York BIA, and the Government of Ontario.

Gruben's exhibition created critical links between life in the Western Arctic, growing global environmental and cultural concerns, and our engagement with the urban landscape during Toronto's coldest season.



*Moving with Joy*, presented at The Bentway Skate Trail, featured seven large-scale, richly coloured sculptural sleds, each displaying video footage and photographs captured spontaneously during time spent at Gruben's spring ice fishing camp in Husky Lakes, part of the Inuvialuit Settlement Region of the Western Arctic.

Sleds are created to move people from one place to another, much like the Gardiner itself. *Moving with Joy* brought together three contrasting environments – the fast-paced, concrete roadways of Toronto; the jubilant rhythm of skaters beneath the Expressway; and the vast landscape of Gruben's home community.



Maureen Gruben  
*Moving with Joy*



Maureen Gruben  
*Annivik*



For our first winter presentation at The Bentway Studio (our new home within the Canoe Landing Campus, just steps from the Gardiner), Gruben developed *Annivik*, a large-scale photography project shot in the landfill of her home community. The images were overlaid with poetic text: transcriptions of Inuvialuit elders telling stories about resourceful lives spent on the land.

The interplay of image and language invited contemplation on the waste generated in our contemporary cities and the rapid change in lifestyle imposed on the Arctic region within just a few decades. Once again, Gruben's work highlighted the connected nature of place, across significant time and distance.

# Growing Partnerships

It takes a village to re-imagine what our city can do! Here are highlights from some of our favourite collaborations last year →



## FUTURE-FORWARD

# Memory Work Collective, From Later Studio, and Scotiabank CONTACT Photography Festival: *Memory Work*

The Bentway's western entrance has and continues to be both a physical gateway and an artistic portal to contemplate Toronto's future. In spring we continued this tradition in partnership with CONTACT, From Later Studio, and the Memory Work Collective, collaborating to create a monument that commemorates an urban future defined by collective care, and politics that value nurturing rather than growth. *Memory Work* is a multi-media mural featuring twelve embellished portraits of six revolutionary women and non-binary figures from a future Toronto, and also a phone number visitors can dial to listen to stories of these luminaries. The project itself is a demonstration of these essential values, as Rajni Perera and the other nine artists worked collectively to bring these embellished portraits and their associated stories to life.



## THEATRE OF THE CITY

# Luminato Festival Toronto and the Henry G20 Group: *Henry G20*

During the height of the pandemic theatre spaces across the city were forced to shut their doors, leading some artists to embrace technology and inhabit unconventional performance spaces as never before. Exploring the city as stage, by way of the digital, The Bentway worked with Luminato and the Henry G20 group to immerse Torontonians in the world of *Henry G20*: a Shakespearean tale of protest, civil liberties, and conflict on the streets of Toronto during the G20 protests of 2010. *Henry G20* was a performance project brought to life through augmented reality during a period of social distancing - delivered through QR code and a mobile app. At a time marked by upheaval and calls for justice, this work reminded us of the ongoing importance of public space as a site for social action.



## A COMMUNITY ARCHIVE

### SKETCH Working Arts: *Reconstructions of Home*

Over the past year, the artists of SKETCH's Reconstructions of Home Curatorial Collective have been in residency at The Bentway presenting their multi-phase public art project, *Reconstructions of Home*. The collective presented *Here Us* and *a wandering*, exhibitions and audio experiences that invited the public to celebrate the creativity and resilience of unhoused communities in Toronto and to join them in ending the stigmas regarding homelessness. *Reconstructions of Home* archived and amplified the voices of those experiencing homelessness and their contributions to the changes and development in our city. SKETCH's artistic initiatives at The Bentway may be temporary but have lasting impact, continuing to inform our work with vulnerable communities and the further growth of the public realm under the Gardiner Expressway.

## COMMUNITY CONNECTIONS

### Local, grassroots animators: various community projects

The Bentway's Community Incubation Program offers capacity-building, training, production support, and financing for emerging artists, organizers, urbanists, and community groups seeking to develop engaging programs for our neighbourhood. In 2021, local artists brought three opportunities to nearby residents, including rock painting workshops, window mural painting, and neighborhood mapping. After nearly two years of the pandemic, the artists and CityPlace community welcomed the opportunity to come together in a celebration of creativity and connection.



## SHARED TABLE

### The Depanneur: Communal Picnic

The Bentway collaborated with west end foodie hub and long-time partner, The Depanneur, to offer a truly unique dining experience last summer. The Bentway became an outdoor picnic spot where visitors could enjoy a meal with friends, experience diverse culinary cultures, and make the most of long summer evenings under the shade of the highway. We offered weekly three-course meals 'al fresco' from local chefs, featuring the cuisines of Tunisia, Philippines, Jamaica, and more, with a pay-it-forward program to help distribute meals to our community's most vulnerable residents (through the Spadina-Fort York Community Care Program).



## WEATHER PATTERNS

### University of Waterloo, Entuitive, and Turner Fleischer: *Adaptive Artifacts*

Working closely with researchers and practitioners at the University of Waterloo, Entuitive, HoK and Turner Fleischer; The Bentway set out to study our Phase 1 site's unique microclimate and investigate the ways in which responsive architecture can impact and improve visitors' comfort. *Adaptive Artifacts* seeks to understand how natural systems, computers, and specialized fabrication processes can work together to create spaces that are more responsive and resilient. This multi-phase project began with *Adaptive Artifacts: Weather Stations*; a series of on-site sculptural elements collecting environmental data. This phase of the project is accompanied by a website and smartphone app that enables users to provide feedback about their physical experience, and review anonymized data to better understand environmental phenomena.

# People of The Bentway

The friends, neighbours,  
and true-believers who  
make this a special place →



## BOARD MEMBER / CITY-BUILDER

### Krystal

Leading by example, Krystal is a champion of building places for all and creating positive social outcomes for our future. Her work on The Bentway's Board of Directors is one of many ways she drives tangible impacts on the built environment and people's lives.

As Head of Sales and Marketing for Dream Unlimited – one of Canada's largest residential and commercial real estate organizations – Krystal plays a key role in developing habitable and sustainable master planned communities. Actively involved in major arts, design, fashion, and charitable organizations such as the Art Gallery of Ontario, the Royal Ontario Museum, the YMCA and many others; she brings a powerful voice to the table, pushing to unite art and city-building across Toronto.

“ I am very fortunate to be in the position I am in today. I play a role in creating environments that are inclusive for all and promote positive change in the world for people of all ages and backgrounds.

**The Bentway is proof that the infrastructure we inherit can be transformed into a vibrant, dynamic, and integral part of our lives.”**



## NEIGHBOUR / MENTAL HEALTH ACTIVIST

### Meghan

Meghan Yuri Young can often be found strolling through The Bentway with a tea in hand and her two French bulldogs, Curry & Kiba, by her side. But as an active arts advocate and neighbour, The Bentway has also been a space where she practiced yoga, a thruway for her run club, a training site for her kickboxing coach certification, a space where she has engaged with public art, and a park full of discovery for her and her pups.

Having worked in media for more than ten years, Meghan is passionate about building safe, supportive, and inclusive communities, and is a founding member of The Sad Collective - a community organization that offers a safe space for conversation, awareness, and de-stigmatization of mental health and emotional expression.

“ There's something special when forgotten spaces are brought back to life. And to bring it back to life with such intentionality is, well, beyond special. The conversations The Bentway is having with its community through installations, activations, celebrations, and more are crucial, and yet packaged in ways that are playful and fun.

**I've been here for 6 years now and have watched as the area has developed into a cultural hub. And having an avid appreciation of art, I've loved seeing how the space is activated, not only through fun things to do... but especially through art.”**



## **CURATOR / PLATFORM-BUILDER** **Anna**

Anna Gallagher-Ross plays a vital role in creating exceptional programming at The Bentway year-round. Though born and raised in Tkaranto/Toronto, Anna spent the past seven years living in the U.S., where from 2017 to 2021 she was Co-Artistic Director & Curator of Fusebox Festival, the acclaimed international performance festival which features interdisciplinary artists from Austin, the U.S., and around the world.

Joining The Bentway in 2021 meant a major cross-border move and meeting new colleagues only virtually for several months. Now, as our Senior Manager of Programming, Anna is leading an expansion of Bentway offerings beyond the Gardiner and into the local neighbourhoods.

“**The Bentway works every day to be an accessible and inclusive space for the people of Toronto. From workout classes and free ice skating, to art installations and contemplative walks, The Bentway is a space that transforms to meet the needs of its visitors. On the programming team we are inspired by the ways Torontonians already make use of our space, demonstrating its many possibilities, and through the diverse artistic partnerships and programs we present, we hope to continue to push the possibilities of artistic experience and of the space itself.**”

## **NEIGHBOURHOOD ADVOCATE / CO-CONSPIRATOR** **Mary**

Mary Fragedakis is the new Executive Director of our local, burgeoning Business Improvement Area, where she’s quickly become a key ally and co-conspirator for The Bentway’s work.

A former City Councillor, she comes armed with experience as a Board member at the Toronto Public Library, Harbourfront Centre, and Toronto Arts Council, as well as a former Commissioner for the Toronto Transit Commission. Mary sees the big picture, and she knows how to get things done.

By applying her business expertise and passion for community-building, Mary works to ensure that “Toronto thrives here” in CityPlace and Fort York.

“**I’ve lived in Toronto all my life, and was raised to believe that community is where we draw our greatest strength. Our collective prosperity grows when local opportunities are created, cultural representation is collaborative, the arts are accessible and life is affordable. The Bentway is part of this mix; by providing free events, art installations and experiences, the space under the Gardiner becomes a place for connection and opportunity.**”





## NUMBER-CRUNCHER / TEAM CHEERLEADER

### Tessa

Tessa Chan brings nearly a decade of experience in corporate finance to The Bentway, a place where her career in finance and love for the arts converge. She joined the organization in 2020, after completing a term as Director of Finance at Calgary Opera.

Tessa ensures that The Bentway's goals are achieved in the most cost-effective manner while maintaining artistic integrity. Her passion for the non-profit arts sector comes from the dedication and collaboration she sees among staff, donors, and visitors at The Bentway.

“The work that we do at The Bentway is unlike anything else. I see the team working every day to create positive experiences for our community, but it's exciting to see the big picture come together when I attend events and board meetings. I get to see the magic of the 'behind the scenes' come to life.”



## ARCHITECT / TEACHER

### Matthew

Matthew Hickey is busy making sure our city lives up to its promise and potential. In addition to practicing architecture as a Partner at Two Row Architect and overseeing design and development for the firm, Matthew is part of the design team building a new future for the under Gardiner corridor.

Mohawk, Wolf clan, from the Six Nations of the Grand River First Nation, Matthew focuses on regenerative and restorative design - encompassing ecological, cultural, and economic principles. Advancing the concepts of integrated landscape, Universal Accessibility, and place-keeping for all species, including humans; Matthew pushes us to explore infrastructural opportunities and encourages The Bentway to keep demonstrating what is possible.

“In order to have a dynamic place to live, we need artists. The Bentway is keeping place for artists, keeping place for our relationships - the full suite of life including animals, plantings - The Bentway is generating a green space and opportunities for connection. We are laying the seed for seven generations ahead. What we are testing now could benefit us all 50 years from now.”

The Gardiner is like a stitch between the City and the waterfront. The spaces under this expressway were lost... imagine what happens in ten to fifteen years when people stop owning cars... we have so many opportunities to create with care... it could be activated, alive.”



## NEXT GEN URBANISTS Jess and Faizaan

Jess Misak and Faizaan Khan joined The Bentway as our latest Public Space Fellows, where they're playing a pivotal role in shaping and leading The Street Summit, an "un-symposium" that explores how cities everywhere can re-imagine their streets, and informing the organization's planning and design work. At the same time, they're pursuing their own research interests with support from The Bentway team.

The fellows' diverse professional and academic backgrounds make them a dynamic pair – Jess, an architect by training and community organizer, and Faizaan – a Scarborough-based emerging city-builder with a background in design and non-profit programming.

In addition to planning a memorable roster of programming for The Street Summit, Jess is building on their master's thesis about queer collectivity in Toronto's public spaces, exploring the Under Gardiner as a site of queer urban ecologies. Faizaan's research focuses on suburban heritage and histories of public space, including The Bentway.

“ The Public Space Fellowship has provided the platform to create programming and research that we might not otherwise have the opportunity to pursue. What excites us most is that The Bentway is more than a public space or public park; it is a living lab of the work that we are doing as part of this fellowship.”



# Taking on the Street

Phase 1 of The Bentway was just the beginning of a growing creative movement.

Here's how our work continues in the year to come →



Mimi Lien  
PARADE



Willi Dorner  
*Bodies in Urban Spaces*

## Street as Civic Stage

The pandemic prompted cities everywhere to reconsider the role of their streets. Familiar routes, previously reserved for cars, became sites for improvisation, innovation, and renewed action. Together, we were reminded why urbanist Jane Jacobs referred to them as the city's "most vital organs".

The Bentway was founded on the idea that our streets must do more. Our Summer 2022 season continues this dialogue through free public programming across our sites and the surrounding neighborhood.

Running May 26 to August 21, STREET features public art installations and performances, conversations, and celebrations that invite audiences to see the streets of Toronto anew - both under the Gardiner and along nearby roads, sidewalks, and public spaces.

Anchoring the season is a major new public art installation by **Tony Award-winning set designer and artist, Mimi Lien**. Commissioned by The Bentway, Lien's *PARADE* suspends a 650ft conveyor-belt below the Gardiner Expressway, carrying a kinetic procession of playfully reimagined objects from our everyday commutes - stop signs, bicycles, pylons, traffic mirrors - that transform a mundane urban scene into street theatre.

Additional season contributors include choreographer **Willi Dorner**, **Michael Ford** (AKA "The Hip Hop Architect"), **Michael Lee Poy**, and the **Ogimaa Mikana Project** (Susan Blight and Hayden King), among others.

Visit [thebentway.ca/street](https://thebentway.ca/street) to learn more.

# Gardiner as Gateway

The elevated Gardiner Expressway cuts through the core of the city, changing in character and opportunity along its length.

This year we put out a call for Canadian artists and designers to propose creative interventions that re-imagine **two key under-Gardiner intersections** as better Waterfront gateways for pedestrians and cyclists: York Street and Simcoe Street.

Selected designs led by 5468796 Architecture + Office In Search Of (Winnipeg/Toronto) and O2 Planning & Design, Mulvey & Banani Lighting + ENTUITIVE (Calgary/Toronto) will test experimental and innovative approaches to wayfinding and storytelling, and are due to be installed later in 2022, remaining in place until that section of the Gardiner Expressway undergoes necessary repairs (scheduled for 2025).

**Waterfront ReConnect** is a collaboration between The Bentway, the City of Toronto, the Waterfront Business Improvement Area, and the Toronto Downtown West Business Improvement Area.

Catch the latest updates at [thebentway.ca/reconnect](https://thebentway.ca/reconnect).



## 6.5km of Possibility

As Toronto works to rehabilitate and rebuild the Expressway and bring new life to surrounding communities, we have a once-in-a-city opportunity to reimagine how this piece of infrastructure can connect, perform, and inspire.

In partnership with the City of Toronto, we're now developing an **Under Gardiner Public Realm Plan** to outline how the spaces under the Expressway (from Dufferin to the DVP) can better serve our city. Assembling this plan is an inclusive process, involving multiple municipal and private stakeholders, and city-builders like you.

This plan will chart growth not just for The Bentway itself, but for a future, hybrid highway that demonstrates the creativity Toronto is capable of.

The Gardiner was built to connect us, and together we can realize its full potential.

Learn how at [undergardinerprp.ca](https://undergardinerprp.ca).



5468796 Architecture & Office In Search Of  
BOOM TOWN (Rendering)

# Meet our team

## Board of Directors

Mazyar Mortazavi  
Board Chair  
President & CEO, TAS

Daniel Shearer  
Board Vice Chair  
President, Cossette

Munira Ravji  
Board Secretary  
Realtor and Owner, OLEA Real Estate Group

Wil Matthews  
Board Treasurer  
Judy and Wilmot Matthews Foundation

Gabe Gonda  
Managing Director, Corporate Development, The Globe and Mail

Ken Greenberg  
Principal, Greenberg Consultants

Raja Khanna  
CEO & Founder, Lumeto Inc.

Krystal Koo  
Head of Sales & Marketing,  
Dream Unlimited

Jane Pepino  
Partner, Aird & Berlis LLP

Mary Rowe  
President and CEO, Canadian Urban Institute

Judy Matthews  
Judy and Wilmot Matthews Foundation

Barbara Macdonald  
Founder, Barbara Macdonald Interior Design

Drew Sinclair  
Principal, SvN Architects + Planners

Councillor Joe Cressy  
City of Toronto, Ward 10

Councillor Mike Layton  
City of Toronto, Ward 11

## Staff Ensemble

Ilana Altman  
Co-Executive Director

David Carey  
Co-Executive Director

Samantha Caldicott  
Senior Manager, Marketing & Communications

Tessa Chan  
Controller, Finance & Administration

Anna Gallagher-Ross  
Senior Manager, Programming

Kasia Gladki  
Senior Manager, Marketing & Communications  
*(on maternity leave)*

Robert McKaye  
Senior Manager, Planning & Design

Lara Samuel  
General Manager, Operations

Alex Brodovsky  
Front Desk Assistant, Events & Facilities

Sam Carter-Shamai  
Corridor Plan Lead

Michael Clarke  
Manager, Facilities

Stephanie Dudek  
Manager, Production

Jessie Farewell  
Manager, Fundraising & Partnerships

Allie Fenwick  
Coordinator, Marketing & Communications

Dawn Kay  
Manager, Marketing & Communications

Faizaan Khan  
Public Space Fellow

Stephan Lamoureux  
Supervisor, Facilities

Gelila Mekonnen  
Coordinator, Planning & Design

Jaime Meier  
Assistant, HR & Administration

Jess Misak  
Public Space Fellow

Pavneet Pal Singh  
Supervisor, Production

Christopher Parker  
Assistant & EA, Fundraising & Partnerships

Alex Rand  
Manager, Programming

Breanna Stephenson  
Coordinator, Programming

Departing staff alumni: Taylor Balint, Vicki Clough, Margaret Goodfellow, Kris Kinsey, Sarah Munro, Sarah Nguyen

*With enduring thanks to our company of Urban Rangers, event staff, volunteers, and other friends.*



# Thank you to our family of supporters for helping us bring The Bentway to life.

## Founders

Judy & Wil Matthews  
 Mayor John Tory  
 Ken Greenberg  
 City of Toronto  
 PUBLIC WORK  
 The Bentway board, staff & volunteers  
 Waterfront Toronto  
 Artscape

## Champions

City of Toronto  
 Maxine Granovsky Gluskin & Ira Gluskin  
 Anonymous  
 Richard M. Ivey  
 Frances & Tim Price  
 The Hilary & Galen Weston Foundation



## Supporters

### Donors & Foundations

Donald K. Johnson, O.C. & Anna McCowan-Johnson  
 Mazyar Mortazavi & Bitia Doagoo  
 Hal Jackman Foundation  
 Balsam Foundation  
 The McLean Foundation  
 Fondation DRG  
 DiamondCorp and Lifetime Developments  
 Partners in Art  
 Hogarth Family/The Pioneer Group  
 Tony & Anne Arrell  
 Barbara & Dougal Macdonald  
 Tom MacMillan  
 Gabe Gonda  
 The Ouellette Family Foundation  
 Cidel Asset Management Inc.  
 Erin & Daniel Shearer  
 Canadian Parks and Recreation Association  
 Nuyten Dime Foundation  
 Ottawa Community Foundation  
 Robin & Robert Ogilvie  
 Elske & Jim Kofman  
 Liza Mauer & Andrew Sheiner  
 Ilana Altman & Brian Melcher  
 KPMG Foundation  
 David & Jolie Carey  
 Tessa Chan

### Government Partners

Ministry of Heritage, Sport, Tourism and Culture Industries  
 Exhibition Place  
 Canada Council for the Arts  
 Ontario Cultural Attractions Fund  
 City of Toronto (as part of ArtworxTO)  
 Department of Canadian Heritage  
 Ontario Arts Council  
 Bureau du Québec à Toronto  
 Consulat General de France a Toronto

### Corporate Partners

Waterfront BIA  
 RBC  
 TD Bank Group  
 TAS  
 Concord  
 Autodesk  
 Toronto Downtown West BIA  
 Billy Bishop Airport & Nieuport Aviation  
 Cossette  
 CRAFT PR  
 CityPlace Fort York BIA  
 Athleta



# Our Finances

	2021/22	2020/21
<b>REVENUE</b>		
Start-Up Operating Funds	\$ 600,000	\$ 1,000,000
Donations	\$ 2,230,500	\$ 1,162,500
Government Subsidies	\$ 133,600	\$ 812,500
Government Grants	\$ 339,900	\$ 527,000
Corporate Partnerships	\$ 253,500	\$ 74,300
Event Rentals	\$ 120,700	\$ 26,500
Other	\$ 188,600	\$ 60,400
In-Kind	\$ 352,400	\$ 254,900
<b>Total</b>	<b>\$ 4,219,200</b>	<b>\$ 3,918,100</b>
<b>EXPENSES</b>		
Human Resources	\$ 1,187,600	\$ 1,335,000
Programming	\$ 1,074,000	\$ 896,100
Marketing & Engagement	\$ 385,300	\$ 383,400
Administration	\$ 306,700	\$ 252,400
Visitor Experience & Facilities	\$ 311,000	\$ 165,000
Planning & Design	\$ 223,000	\$ 109,500
Development	\$ 97,900	\$ 33,800
Other	\$ 11,300	-
Amortization	\$ 96,400	\$ 137,000
In-Kind	\$ 352,400	\$ 254,900
<b>Total</b>	<b>\$ 4,045,600</b>	<b>\$ 3,567,100</b>
Surplus / (Deficit)	\$ 173,600	\$ 351,000

All figures are rounded to the nearest \$100.

Recent fiscal year change:  
 July 1 2020 to June 30 2021  
 July 1 2021 to March 31 2022





**Thank you for  
believing in  
The Bentway.**

#### IMAGE CREDITS

5468796 Architecture & Office In  
Search Of – 40  
Eric Black – 27  
Sam Carter-Shamai – 39  
Samuel Engelking – 18, 46  
Lisa Fernandez – 37  
Jonathan Gazze – 7, 10 (bottom), 42  
Toni Hafkenschaid – 35, 38, 48  
Dawn Kay – 23  
Jack Landau – 6

Jahmal Nugent – 20  
Shane Parent – cover, 5, 8, 13, 14,  
15, 17, 21, 22, 25, 33, 44  
Cassandra Popescu – 19  
Wei Qi – 3 (left)  
Sky Analytics – 2  
Lisa Rastl – 36  
Sarah Wilde Photography – 10  
(top),  
Andrew Williamson – 3 (right)



**thebentway.ca**  
**hello@thebentway.ca**  
**@thebentway**

OFFICE:  
**55 Fort York Blvd.**  
**Toronto, ON**

SITE:  
**250 Fort York Blvd.**  
**Toronto, ON**

**Charitable Registration**  
**#75217 5299 RR0001**